



DUPLEX BLOCK D  
FRONT ELEVATION



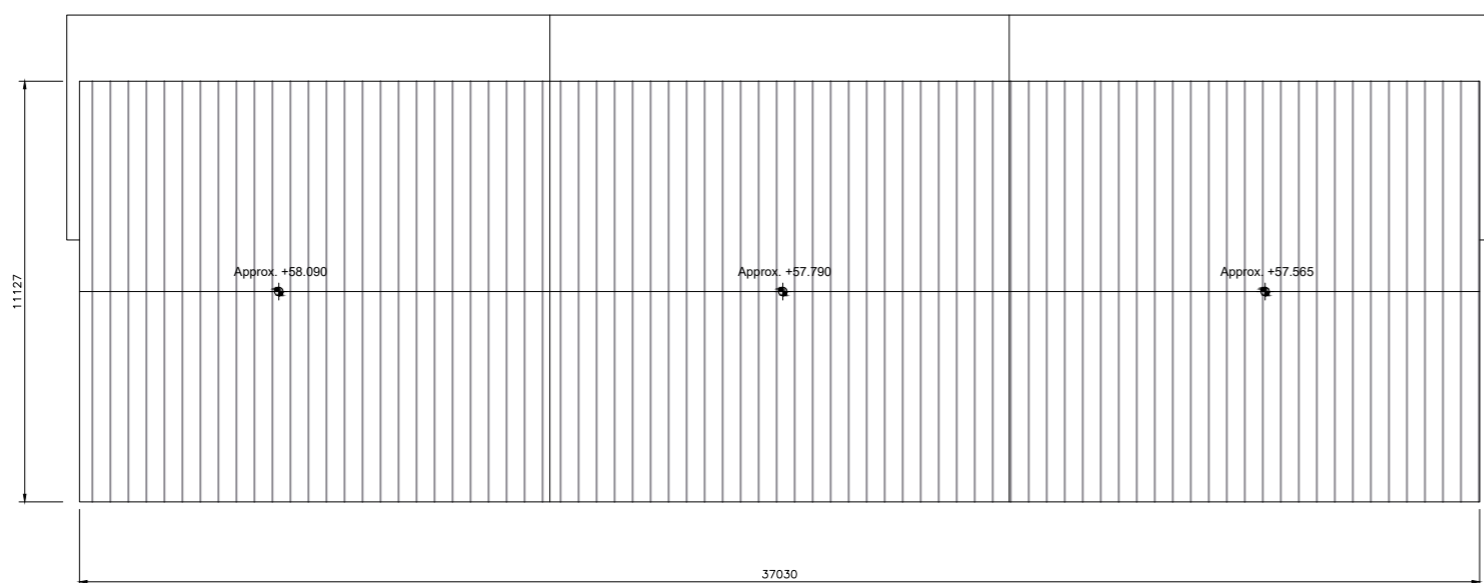
DUPLEX BLOCK D  
SIDE ELEVATION (EAST)



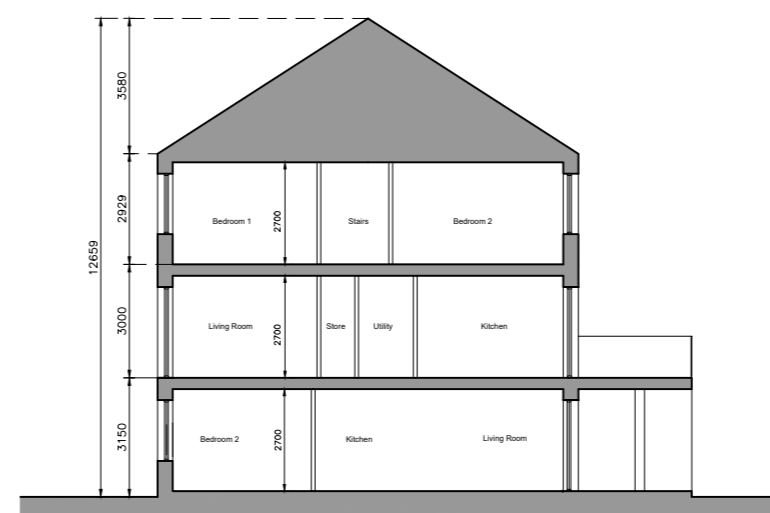
DUPLEX BLOCK D  
REAR ELEVATION



DUPLEX BLOCK D  
SIDE ELEVATION (WEST)



DUPLEX BLOCK D  
ROOF PLAN



DUPLEX BLOCK D  
SECTION AA

**Unit Type**

- 3 Bed Duplex - 5 Person
- 2 Bed Apartment - 3 Person
- 1 Bed Apartment - 2 Person

Block	1 Beds	2 Beds	3 Beds	Total Units
D	1	3	6	10

- © This drawing is copyright.
- 1 Do not scale this drawing.
- 2 Errors and omissions to be immediately notified to Architect.
- 3 All dimensions to be checked on site.
- 4 To be read with relevant Engineers drawings.

**Note on Internal Floor Plans**  
All noted room areas are gross. The proposed areas and aggregate areas comply with Sustainable Urban Housing: Design Standards for New Apartments Guidelines for Planning Authorities. (December 2020)

Where bedroom areas are noted they are exclusive of any built-in storage space.

Storage is generally provided off the hallway or kitchen, and is not provided within a bedroom. Furniture, fittings and fixtures shown on the plans are indicative.

**External Finishes:**

**Roof:**  
Slate or clay/concrete tiles with solar thermal or photovoltaic panels subject to orientation and detailed design

**Walls:**  
Selected facing brick with render where indicated on drawings with precast / stone capping or pressed metal capping to parapets

**Cladding to Upper Level:**  
Dark metal / Dark fibre cement boarding where indicated on drawings.

**Louvers:**  
Proprietary metal louver doors with colour to match windows/doors where indicated on drawings.

**Windows:**  
Aluminium framed window system

**Gutters/downpipes:**  
uPVC or aluminium

**Balconies:**  
Projecting: Toughened glazing & stainless steel handrails on precast concrete or metal frame galvanized steel base and guarding/ railing.

**Entrance Canopy:**  
Pressed or standing seam metal on Timber framing

revisions description date ins

revisions	description	date	ins
	Duplex Block D		
	Roof Plan, Section & Elevations		

job  
**Development at Mooretown, Swords Phase 3**

client  
**Gerard Gannon Properties**

issue  
**Planning SHD Stage 3**

**CONROY CROWE KELLY ARCHITECTS**  
65 MERRION SQUARE  
DUBLIN 2

PHONE 6613990.1 FAX 6765715  
e-mail info@ckk.ie

drawing no. 1830-SHD-D-4-301  
revision 1  
date 11/01/22  
ins MN  
checked PG

scale  
1:200 A2  
date  
APL '22  
drawn  
MN  
checked  
PG