



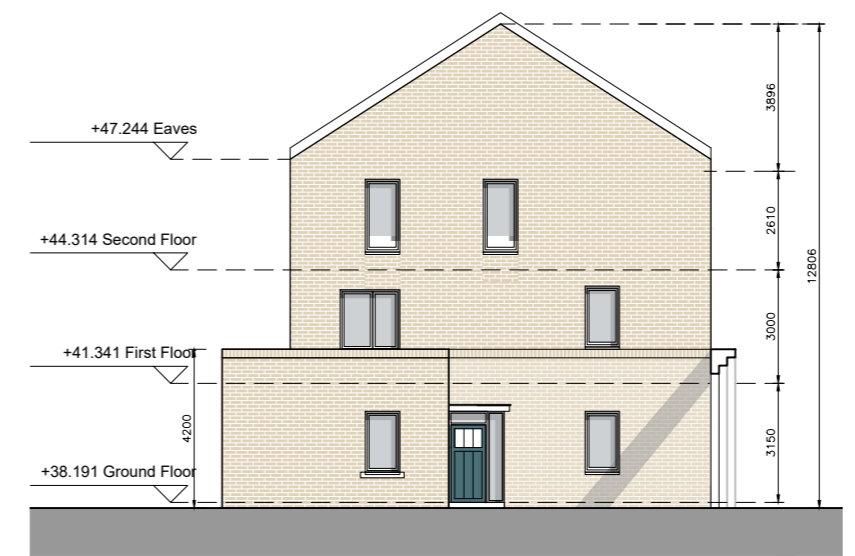
DUPLEX BLOCK F  
FRONT ELEVATION



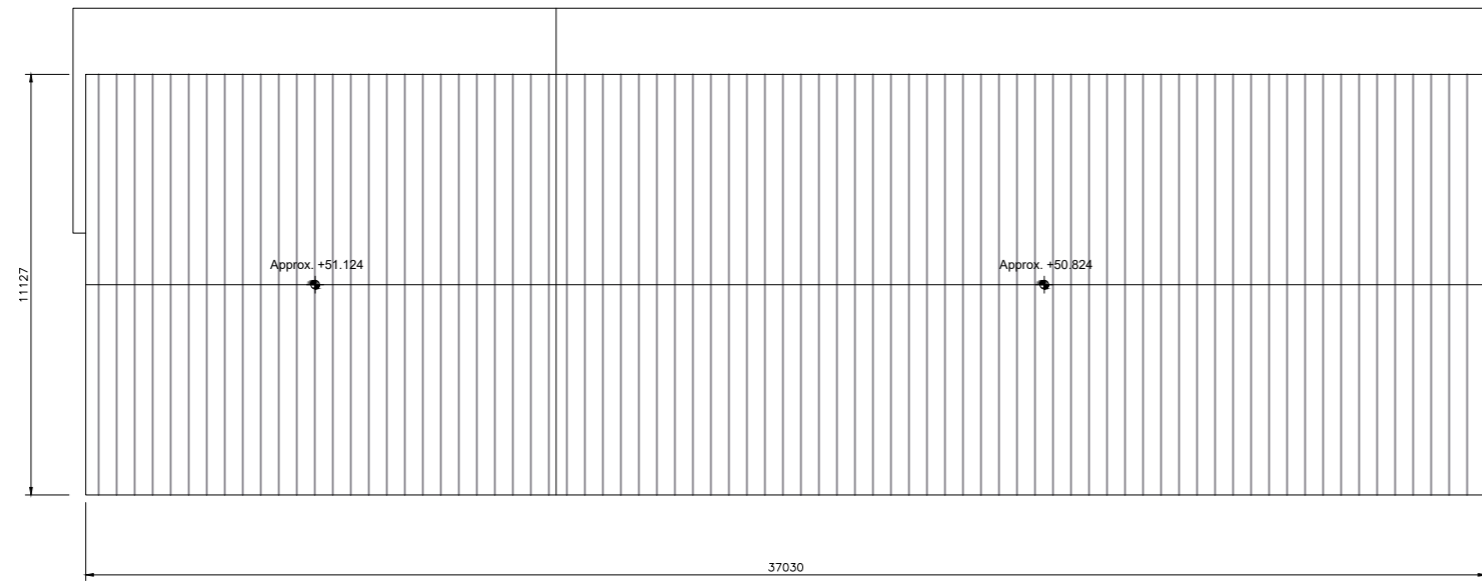
DUPLEX BLOCK F  
SIDE ELEVATION (WEST)



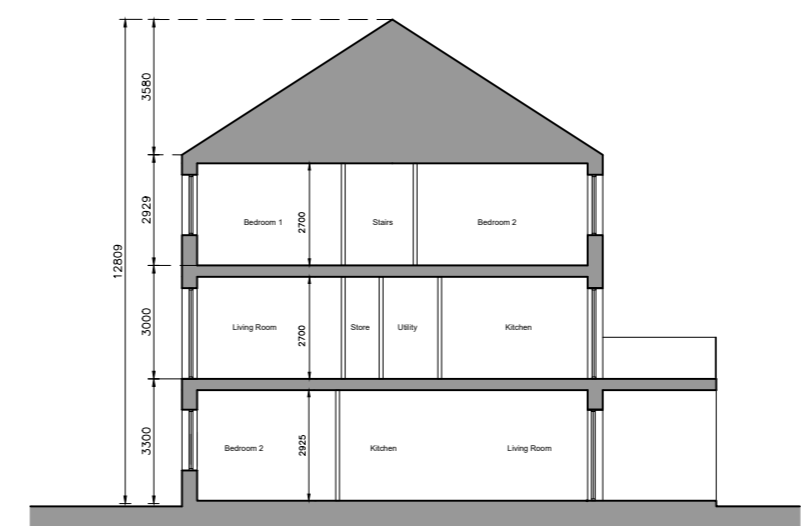
DUPLEX BLOCK F  
REAR ELEVATION



DUPLEX BLOCK F  
SIDE ELEVATION (EAST)



DUPLEX BLOCK F  
SECOND FLOOR PLAN



DUPLEX BLOCK F  
SECTION AA

**Unit Type**

- 3 Bed Duplex - 5 Person
- 2 Bed Apartment - 3 Person
- 1 Bed Apartment - 2 Person

Block	1 Beds	2 Beds	3 Beds	Total Units
F	1	2	6	9

© This drawing is copyright.  
 1 Do not scale this drawing.  
 2 Errors and omissions to be immediately notified to Architect.  
 3 All dimensions to be checked on site.  
 4 To be read with relevant Engineers drawings.

Note on Internal Floor Plans  
 All noted room areas are gross.  
 The proposed areas and aggregate areas comply with Sustainable Urban Housing: Design Standards for New Apartments Guidelines for Planning Authorities. (December 2020)

Where bedroom areas are noted they are exclusive of any built-in storage space.

Storage is generally provided off the hallway or kitchen, and is not provided within a bedroom. Furniture, fittings and fixtures shown on the plans are indicative.

**External Finishes:**

**Roof:**  
 Slate or clay/concrete tiles with solar thermal or photovoltaic panels subject to orientation and detailed design

**Walls:**  
 Selected facing brick with render where indicated on drawings with precast / stone capping or pressed metal capping to parapets

**Cladding to Upper Level:**  
 Dark metal / Dark fibre cement boarding where indicated on drawings.

**Louvers:**  
 Proprietary metal louver doors with colour to match windows/doors where indicated on drawings.

**Windows:**  
 Aluminium framed window system

**Gutters/downpipes:**  
 uPVC or aluminium

**Balconies:**  
 Projecting. Toughened glazing & stainless steel handrails on precast concrete or metal frame galvanized steel base and guarding/ railing.

**Entrances Canopy:**  
 Pressed or standing seam metal on Timber framing

revisions	date	inls
description		

Duplex Block F

Roof Plan, Section & Elevations

job  
 Development at Mooretown, Swords Phase 3

client  
 Gerard Gannon Properties

issue  
 Planning SHD Stage 3

CONROY CROWE KELLY ARCHITECTS  
 65 MERRION SQUARE DUBLIN 2  
 PHONE 6613990.1 FAX 6765715  
 e-mail info@ck.ie

drawing no.  
 1830-SHD-D-6-301

scale  
 1:200 A2  
 Date  
 APL '22  
 Drawn  
 MN  
 checked  
 PG