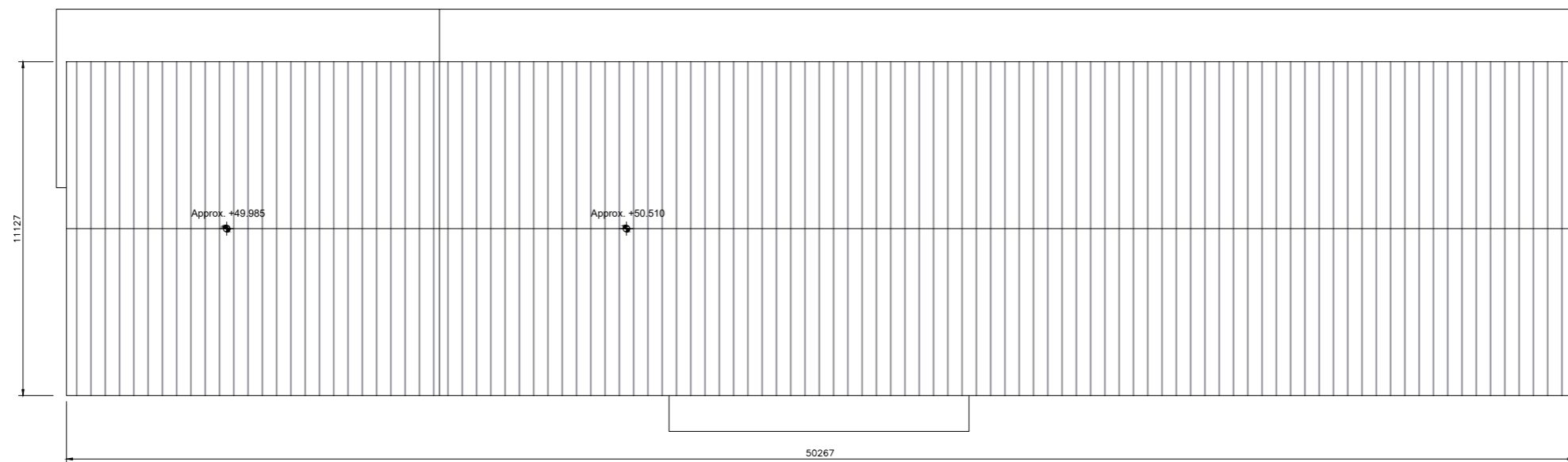




DUPLEX BLOCK G  
FRONT ELEVATION



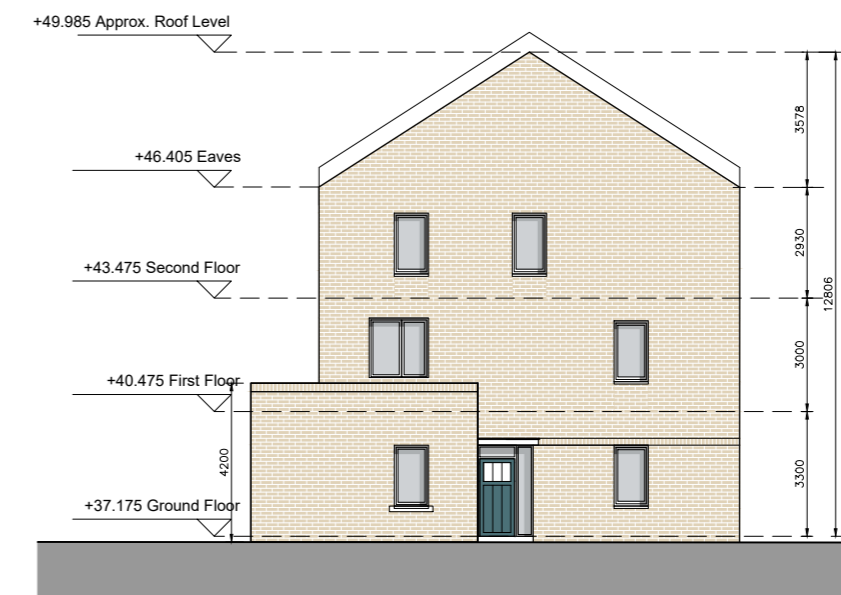
DUPLEX BLOCK G  
REAR ELEVATION



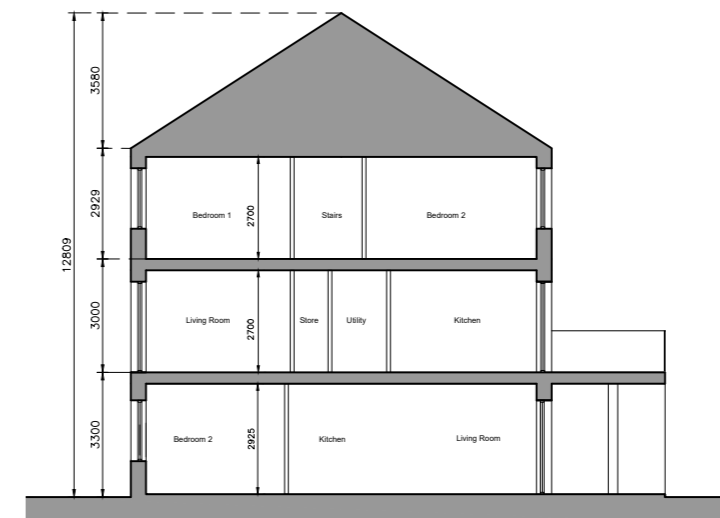
DUPLEX BLOCK G  
SECOND FLOOR PLAN



DUPLEX BLOCK G  
SIDE ELEVATION (WEST)



DUPLEX BLOCK G  
SIDE ELEVATION (EAST)



DUPLEX BLOCK G  
SECTION AA

**Unit Type**

- 3 Bed Duplex - 5 Person
- 2 Bed Apartment - 3 Person
- 1 Bed Apartment - 2 Person

Block	1 Beds	2 Beds	3 Beds	Total Units
G	3	3	8	14

- © This drawing is copyright.
- Do not scale this drawing.
  - Errors and omissions to be immediately notified to Architect.
  - All dimensions to be checked on site.
  - To be read with relevant Engineers drawings.

**Note on Internal Floor Plans**  
All noted room areas are gross.  
The proposed areas and aggregate areas comply with Sustainable Urban Housing: Design Standards for New Apartments Guidelines for Planning Authorities. (December 2020)

Where bedroom areas are noted they are exclusive of any built-in storage space.  
Storage is generally provided off the hallway or kitchen, and is not provided within a bedroom. Furniture, fittings and fixtures shown on the plans are indicative.

**External Finishes:**

**Roof:**  
Slate or clay/concrete tiles with solar thermal or photovoltaic panels subject to orientation and detailed design

**Walls:**  
Selected facing brick with render where indicated on drawings with precast / stone capping or pressed metal capping to parapets

**Cladding to Upper Level:**  
Dark metal / Dark fibre cement boarding where indicated on drawings.

**Louvers:**  
Proprietary metal louvered doors with colour to match windows/doors where indicated on drawings.

**Windows:**  
Aluminium framed window system

**Gutters/downpipes:**  
uPVC or aluminium

**Balconies:**  
Projecting: Toughened glazing & stainless steel handrails on precast concrete or metal frame galvanized steel base and guarding/ railing.

**Entrance Canopy:**  
Pressed or standing seam metal on Timber framing

revisions date ins

description	drawing no
Duplex Block G	1830-SHD-D-7.301
Roof Plan, Section & Elevations	
job	scale
Development at Moortown, Swords Phase 3	1:200 A2
	date
	APL '22
	drawn
	MN
	checked
	PG

client  
Gerard Gannon Properties

issue  
Planning  
SHD Stage 3

**CONROY CROWE KELLY ARCHITECTS**  
65 MERRION SQUARE  
DUBLIN 2

PHONE 66139901 FAX 6765715  
e-mail info@cck.ie