



DUPLEX BLOCK K
FRONT ELEVATION



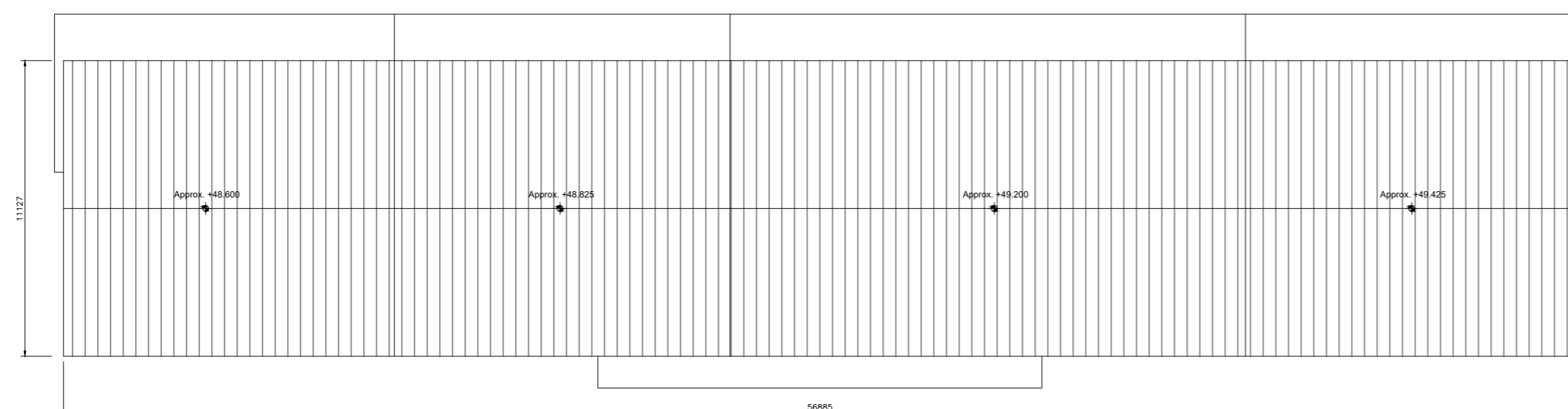
DUPLEX BLOCK K
SIDE ELEVATION (WEST)



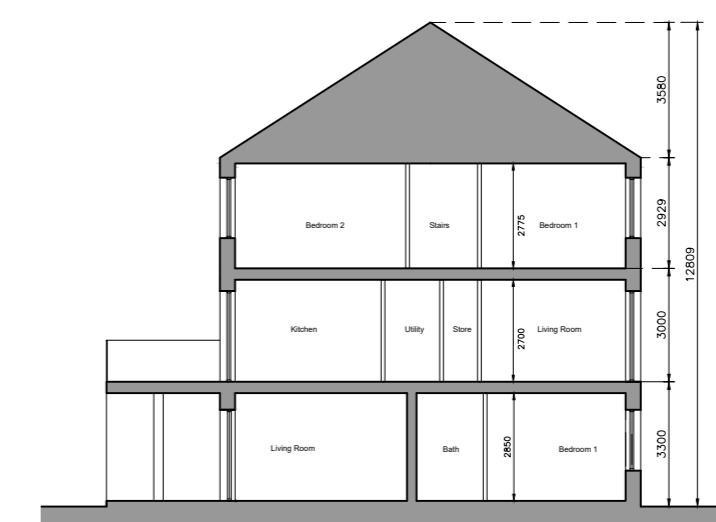
DUPLEX BLOCK K
REAR ELEVATION



DUPLEX BLOCK K
SIDE ELEVATION (EAST)



DUPLEX BLOCK K
ROOF PLAN



DUPLEX BLOCK K
SECTION AA

Unit Type

- 3 Bed Duplex - 5 Person
- 2 Bed Apartment - 3 Person
- 1 Bed Apartment - 2 Person

Block	1 Beds	2 Beds	3 Beds	Total Units
K	5	2	9	16

- © This drawing is copyright.
- Do not scale this drawing.
 - Errors and omissions to be immediately notified to Architect.
 - All dimensions to be checked on site.
 - To be read with relevant Engineers drawings.

Note on Internal Floor Plans
All noted room areas are gross. The proposed areas and aggregate areas comply with Sustainable Urban Housing: Design Standards for New Apartments Guidelines for Planning Authorities. (December 2020)

Where bedroom areas are noted they are exclusive of any built-in storage space.

Storage is generally provided off the hallway or kitchen, and is not provided within a bedroom. Furniture, fittings and fixtures shown on the plans are indicative.

External Finishes:
Roof: Slate or clay/concrete tiles with solar thermal or photovoltaic panels subject to orientation and detailed design

Walls: Selected facing brick with render where indicated on drawings with precast / stone capping or pressed metal capping to parapets

Cladding to Upper Level: Dark metal / Dark fibre cement boarding where indicated on drawings.

Louvers: Proprietary metal louvred doors with colour to match windows/doors where indicated on drawings.

Windows: Aluminium framed window system

Gutters/downpipes: uPVC or aluminium

Balconies: Projecting: Toughened glazing & stainless steel handrails on precast concrete or metal frame galvanized steel base and guarding/ railing.

Entrance Canopy: Pressed or standing seam metal on Timber framing

revisions	date	ins

description	drawing no.	1830-SHD-D-11-301
	date	APL '22
job	scale	1:200 A2
	date	APL '22
client	drawn	MN
	checked	PG

client
Gerard Gannon Properties

issue
Planning SHD Stage 3

CONROY CROWE KELLY ARCHITECTS
65 MERRION SQUARE
DUBLIN 2
PHONE 6613990\1 FAX 6765715
e-mail info@ckk.ie