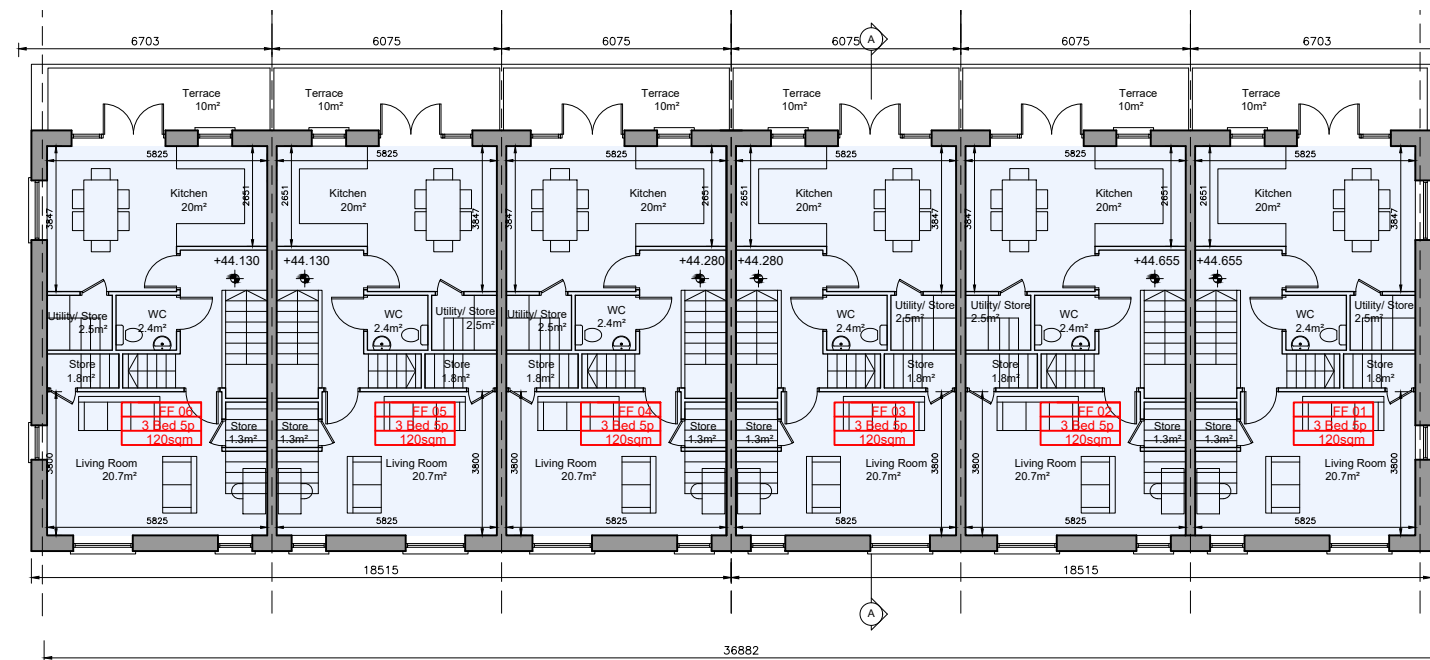
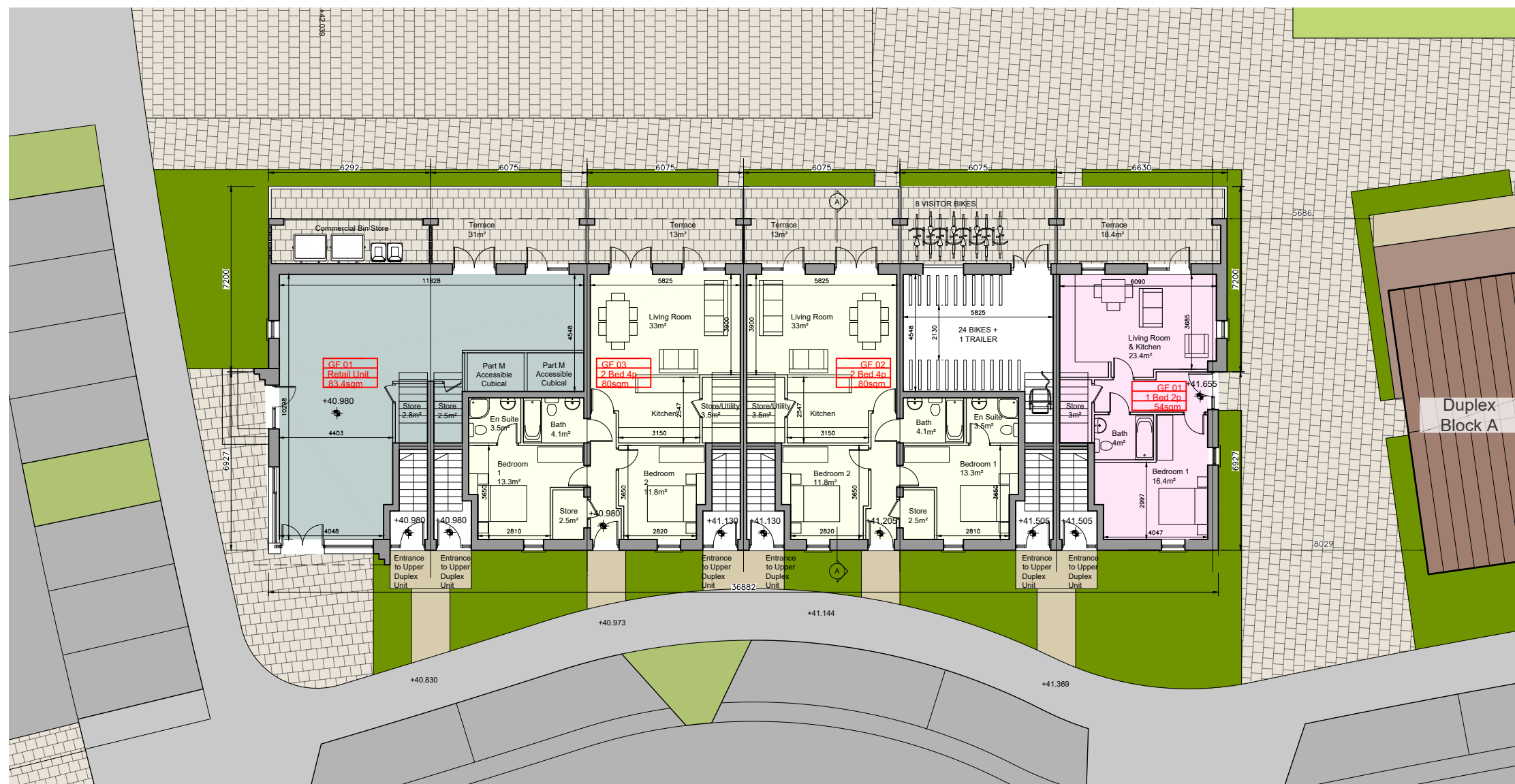


DUPLEX BLOCK B
SECOND FLOOR PLAN



DUPLEX BLOCK B
FIRST FLOOR PLAN



DUPLEX BLOCK B
GROUND FLOOR PLAN

| Unit Type | | | | |
|-----------|----------------------------|--------|--------|-------------|
| | 3 Bed Duplex - 5 Person | | | |
| | 2 Bed Apartment - 3 Person | | | |
| | 1 Bed Apartment - 2 Person | | | |
| Block | 1 Beds | 2 Beds | 3 Beds | Total Units |
| B | 1 | 2 | 6 | 9 |

- © This drawing is copyright.
- Do not scale this drawing.
 - Errors and omissions to be immediately notified to Architect.
 - All dimensions to be checked on site.
 - To be read with relevant Engineers drawings.

Note on Internal Floor Plans
All noted room areas are gross.
The proposed areas and aggregate areas comply with Sustainable Urban Housing: Design Standards for New Apartments Guidelines for Planning Authorities. (December 2020)

Where bedroom areas are noted they are exclusive of any built-in storage space.

Storage is generally provided off the hallway or kitchen, and is not provided within a bedroom. Furniture, fittings and fixtures shown on the plans are indicative.

External Finishes:

Roof:
Slate or clay/concrete tiles with solar thermal or photovoltaic panels subject to orientation and detailed design

Walls:
Selected facing brick with render where indicated on drawings with precast / stone capping or pressed metal capping to parapets

Cladding to Upper Level:
Dark metal / Dark fibre cement boarding where indicated on drawings.

Louvers:
Proprietary metal louver doors with colour to match windows/doors where indicated on drawings.

Windows:
Aluminium framed window system

Gutters/downpipes:
uPVC or aluminium

Balconies:
Projecting: Toughened glazing & stainless steel handrails on precast concrete or metal frame galvanized steel base and guarding/ railing.

Entrance Canopy:
Pressed or standing seam metal on Timber framing

revisions date ins

| description | drawing no. |
|----------------|------------------|
| Duplex Block B | 1830-SHD-D-2-300 |
| Floor Plans | |

| job | scale |
|--|---|
| Development at Mooretown, Swords Phase 3 | 1:200 A2 Gate APL '22 Drawn MN checked PG |

| client |
|--------------------------|
| Gerard Gannon Properties |

| issue |
|----------------------|
| Planning SHD Stage 3 |

CONROY CROWE KELLY ARCHITECTS
65 MERRION SQUARE
DUBLIN 2
PHONE 6613990.1 FAX 6765715
e-mail info@ckk.ie