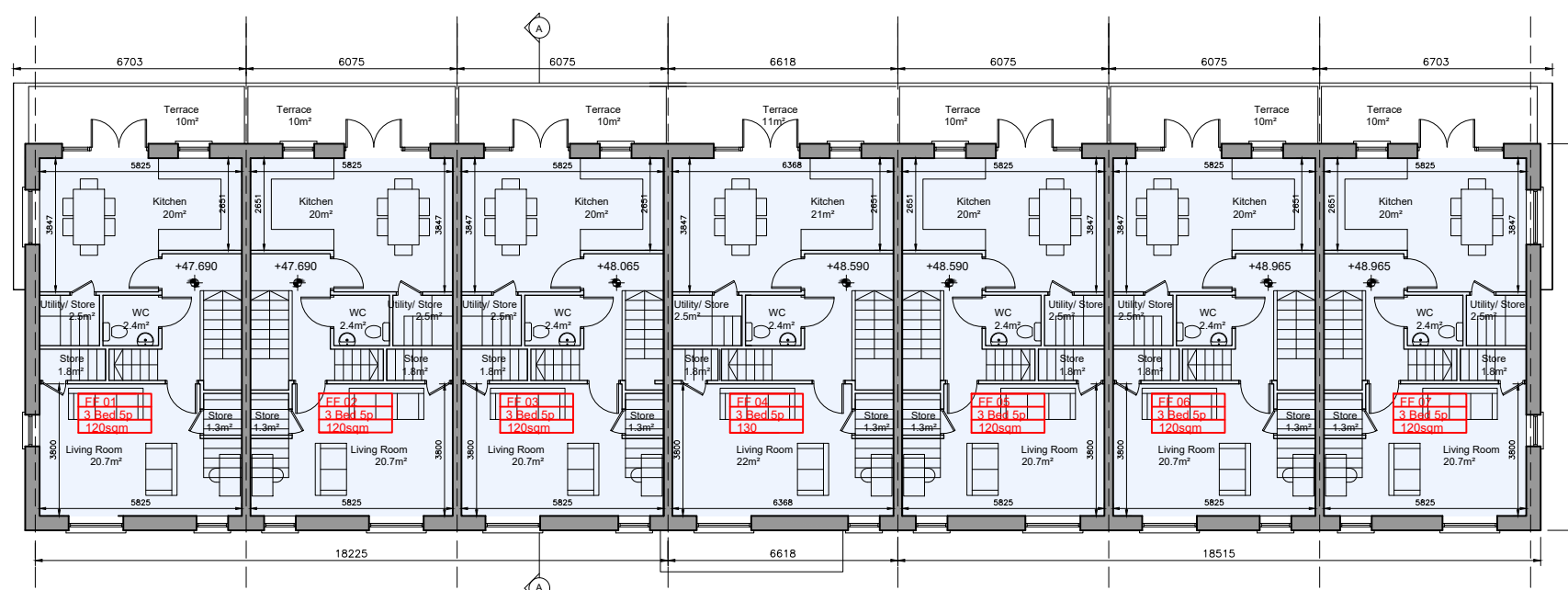
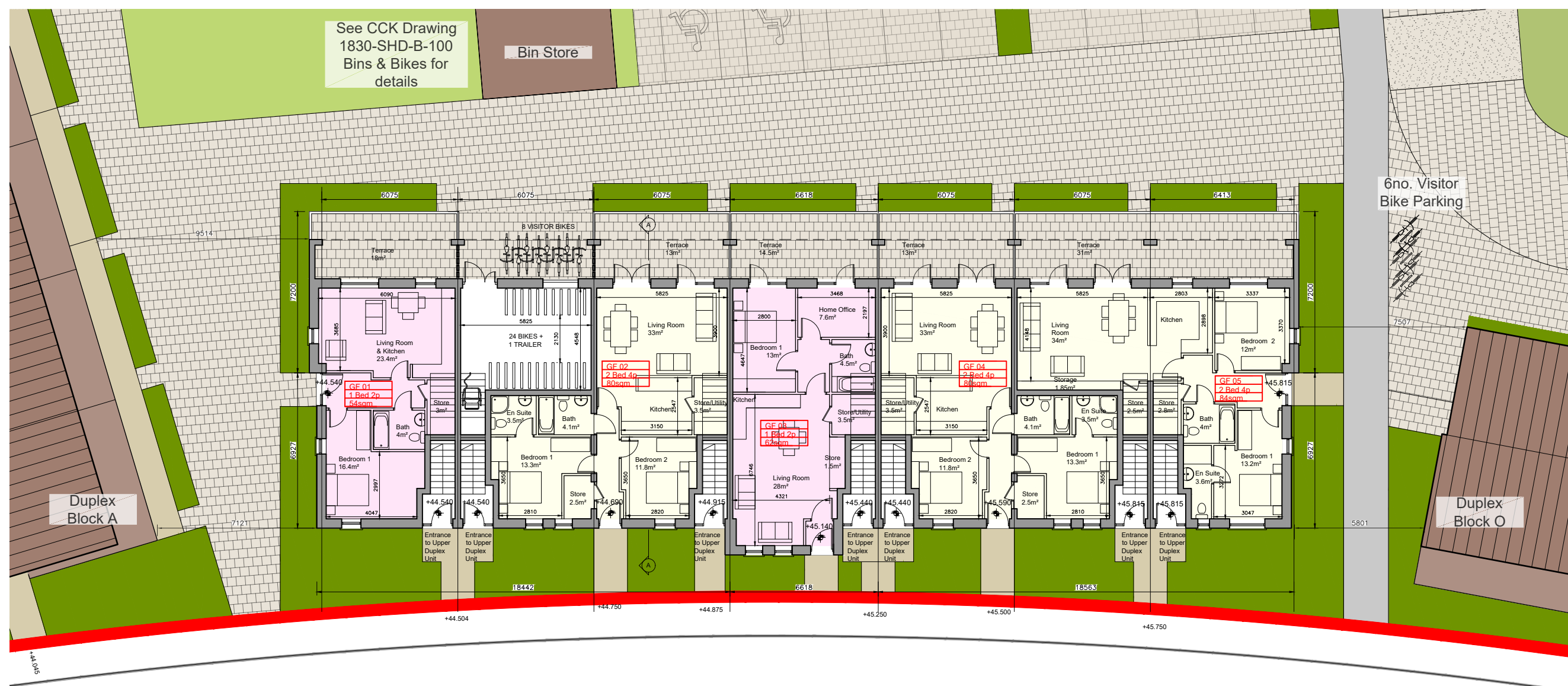


DUPLEX BLOCK E  
SECOND FLOOR PLAN



DUPLEX BLOCK E  
FIRST FLOOR PLAN



DUPLEX BLOCK E  
GROUND FLOOR PLAN

Unit Type

- 3 Bed Duplex - 5 Person
- 2 Bed Apartment - 3 Person
- 1 Bed Apartment - 2 Person

Block	1 Beds	2 Beds	3 Beds	Total Units
E	2	3	7	12

- © This drawing is copyright.
- 1 Do not scale this drawing.
  - 2 Errors and omissions to be immediately notified to Architect.
  - 3 All dimensions to be checked on site.
  - 4 To be read with relevant Engineers drawings.

Note on Internal Floor Plans  
All noted room areas are gross.  
The proposed areas and aggregate areas comply with Sustainable Urban Housing: Design Standards for New Apartments Guidelines for Planning Authorities. (December 2020)

Where bedroom areas are noted they are exclusive of any built-in storage space.

Storage is generally provided off the hallway or kitchen, and is not provided within a bedroom. Furniture, fittings and fixtures shown on the plans are indicative.

External Finishes:

Roof:  
Slate or clay/concrete tiles with solar thermal or photovoltaic panels subject to orientation and detailed design

Walls:  
Selected facing brick with render where indicated on drawings with precast / stone capping or pressed metal capping to parapets

Cladding to Upper Level:  
Dark metal / Dark fibre cement boarding where indicated on drawings.

Louvers:  
Proprietary metal louver doors with colour to match windows/doors where indicated on drawings.

Windows:  
Aluminium framed window system

Gutters/downpipes:  
uPVC or aluminium

Balconies:  
Projecting: Toughened glazing & stainless steel handrails on precast concrete or metal frame galvanized steel base and guarding/ railing.

Entrance Canopy:  
Pressed or standing seam metal on Timber framing

revisions date ins

description	drawing no.
Duplex Block E	1830-SHD-D-5-300
Floor Plans	rev.
job	scale
Development at Mooretown, Swords Phase 3	1:200 A2 Gate APL '22 Drawn MN checked PG
client	
Gerard Gannon Properties	
issue	
Planning SHD Stage 3	

CONROY CROWE KELLY ARCHITECTS  
65 MERRION SQUARE DUBLIN 2  
PHONE 6613990.1 FAX 6765715  
e-mail info@ck.ie