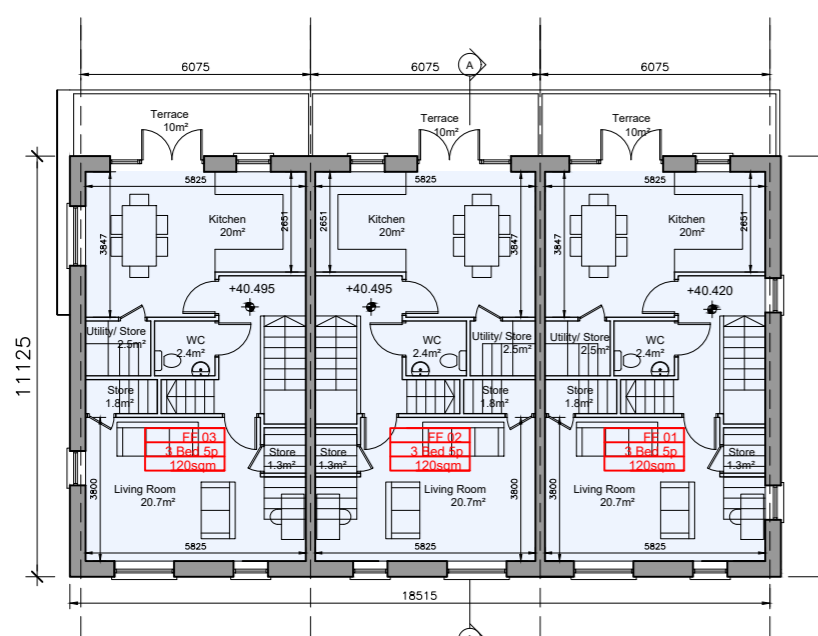


DUPLEX BLOCK H
SECOND FLOOR PLAN



DUPLEX BLOCK H
FIRST FLOOR PLAN



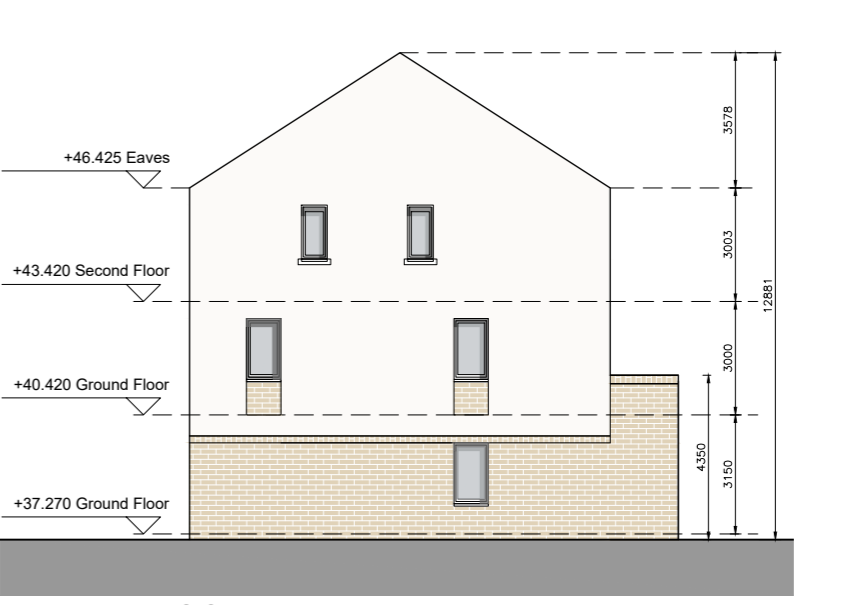
DUPLEX BLOCK H
FRONT ELEVATION



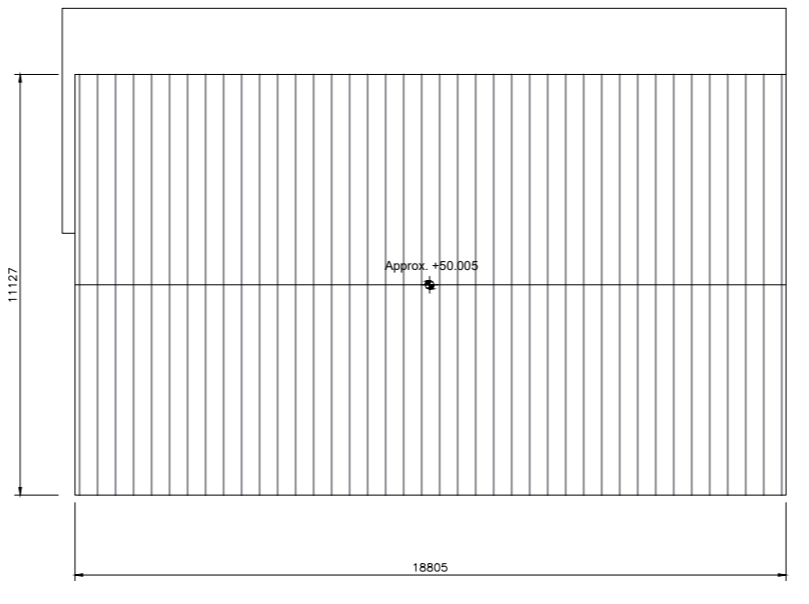
DUPLEX BLOCK H
REAR ELEVATION



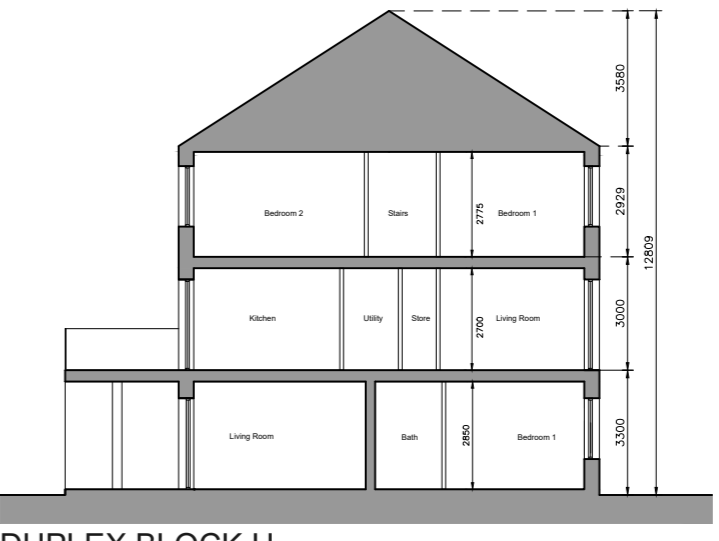
DUPLEX BLOCK H
SIDE ELEVATION (SOUTH)



DUPLEX BLOCK H
SIDE ELEVATION (NORTH)



DUPLEX BLOCK H
SECOND FLOOR PLAN



DUPLEX BLOCK H
SECTION AA



DUPLEX BLOCK H
GROUND FLOOR PLAN

Unit Type

- 3 Bed Duplex - 5 Person
- 2 Bed Apartment - 3 Person
- 1 Bed Apartment - 2 Person

Block	1 Beds	2 Beds	3 Beds	Total Units
H	0	2	3	5

- © This drawing is copyright.
- Do not scale this drawing.
 - Errors and omissions to be immediately notified to Architect.
 - All dimensions to be checked on site.
 - To be read with relevant Engineers drawings.

Note on Internal Floor Plans
All noted room areas are gross.
The proposed areas and aggregate areas comply with Sustainable Urban Housing: Design Standards for New Apartments Guidelines for Planning Authorities. (December 2020)

Where bedroom areas are noted they are exclusive of any built-in storage space.

Storage is generally provided off the hallway or kitchen, and is not provided within a bedroom. Furniture, fittings and fixtures shown on the plans are indicative.

External Finishes:
Roof: Slate or clay/concrete tiles with solar thermal or photovoltaic panels subject to orientation and detailed design

Walls: Selected facing brick with render where indicated on drawings with precast / stone capping or pressed metal capping to parapets

Cladding to Upper Level: Dark metal / Dark fibre cement boarding where indicated on drawings.

Louvers: Proprietary metal louver doors with colour to match windows/doors where indicated on drawings.

Windows: Aluminium framed window system

Gutters/downpipes: uPVC or aluminium

Balconies: Projecting: Toughened glazing & stainless steel handrails on precast concrete or metal frame galvanized steel base and guarding/ railing.

Entrance Canopy: Pressed or standing seam metal on Timber framing

revisions	date	inls
description		
Duplex Block H		
Floor Plans, Section & Elevations		

drawing no. 1830-SHD-D-8-300
date: 11/03/2024
author: Mervin Chan
checked: PG

job: Development at Mooretown, Swords Phase 3
scale: 1:200 A2
date: APL '22
drawn: MN
checked: PG

client: Gerard Gannon Properties

issue: Planning SHD Stage 3

CONROY CROWE KELLY ARCHITECTS
65 MERRION SQUARE DUBLIN 2
PHONE 6613990/1 FAX 6765715
e-mail info@ck.ie