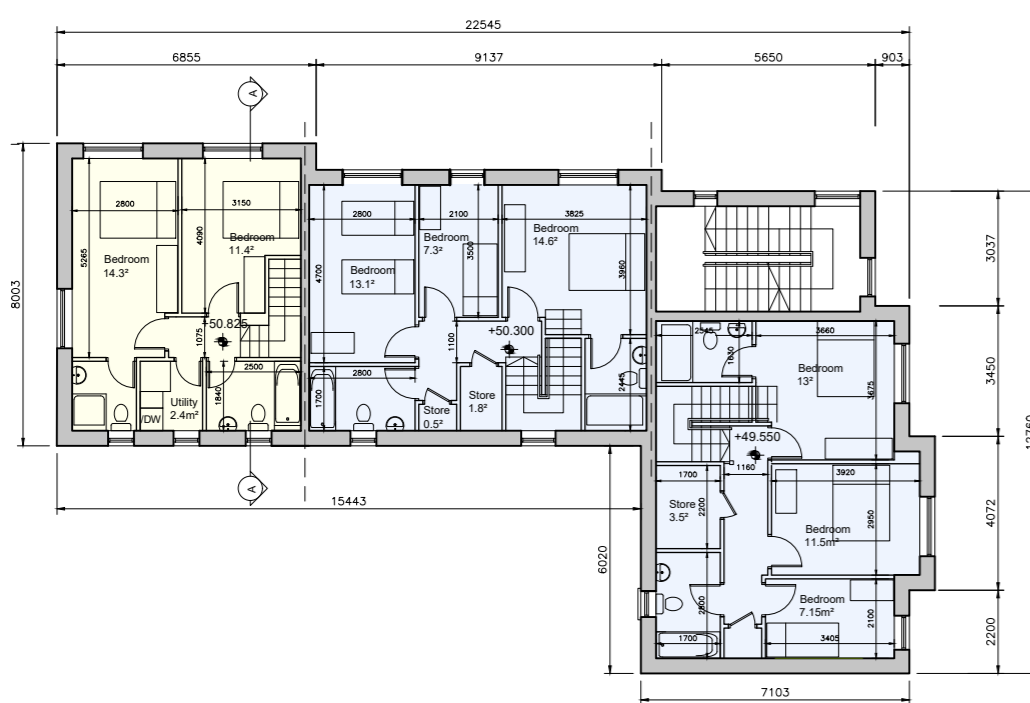
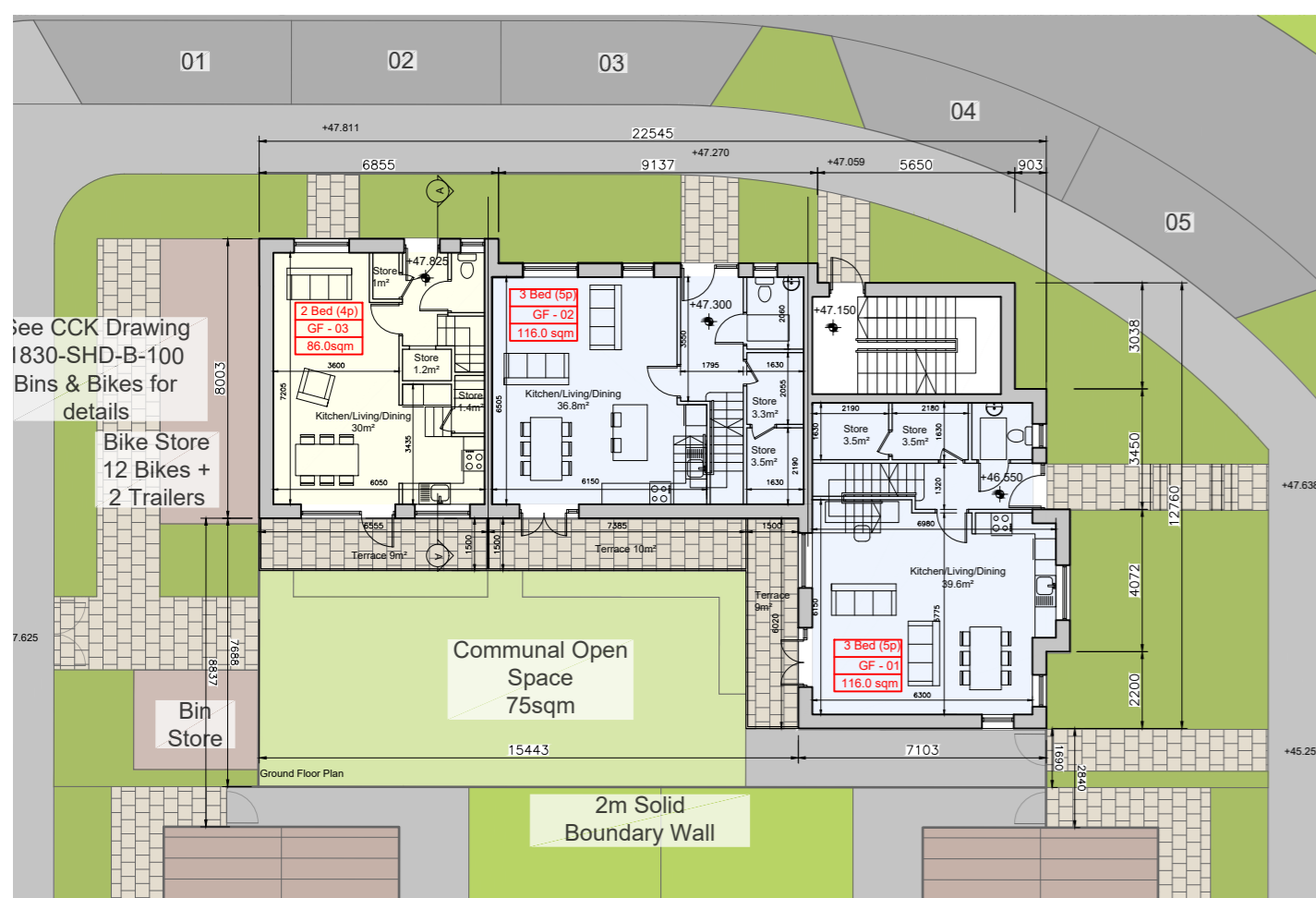


DUPLEX BLOCK S
SECOND FLOOR PLAN



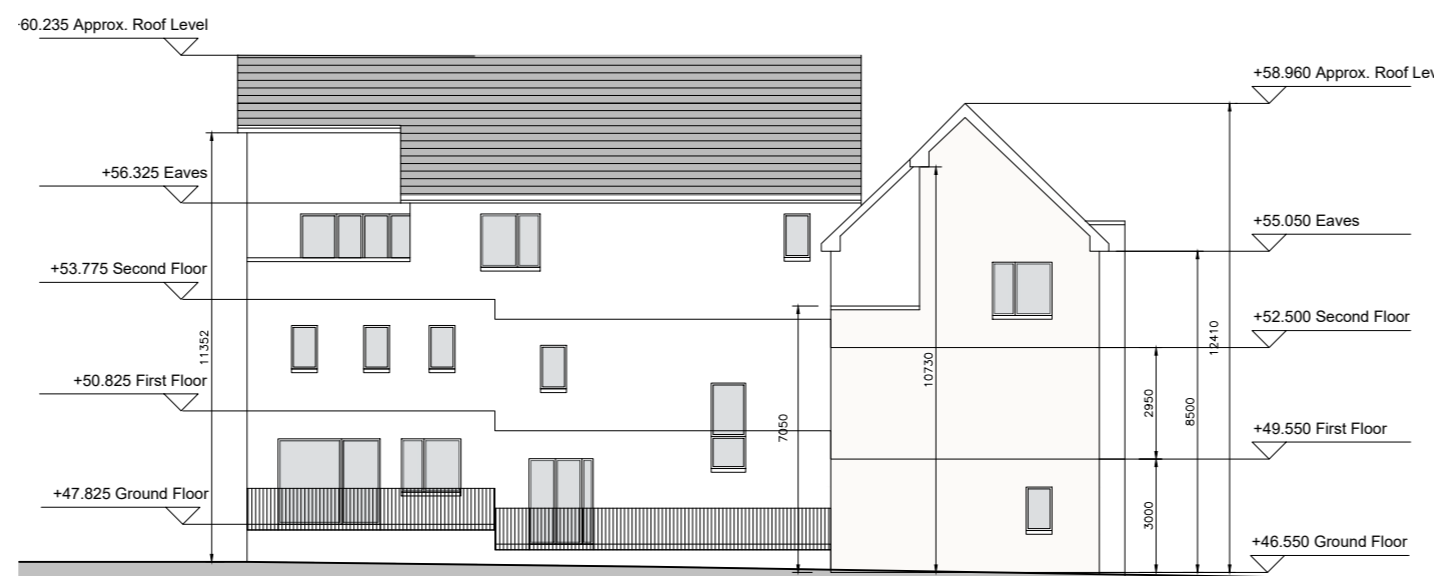
DUPLEX BLOCK S
FIRST FLOOR PLAN



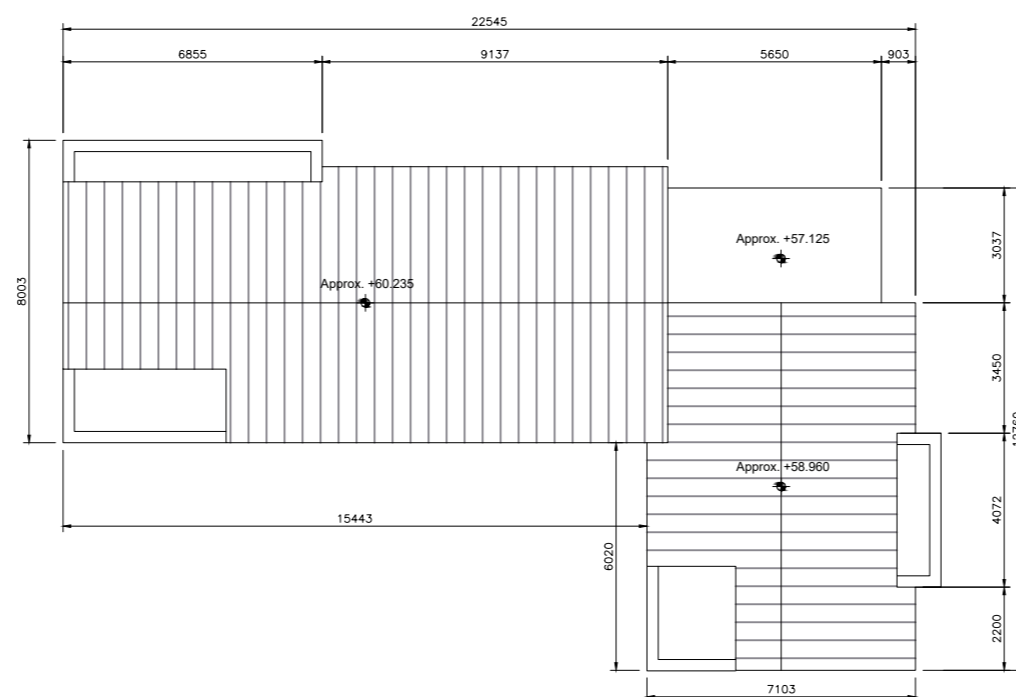
DUPLEX BLOCK S
GROUND FLOOR PLAN



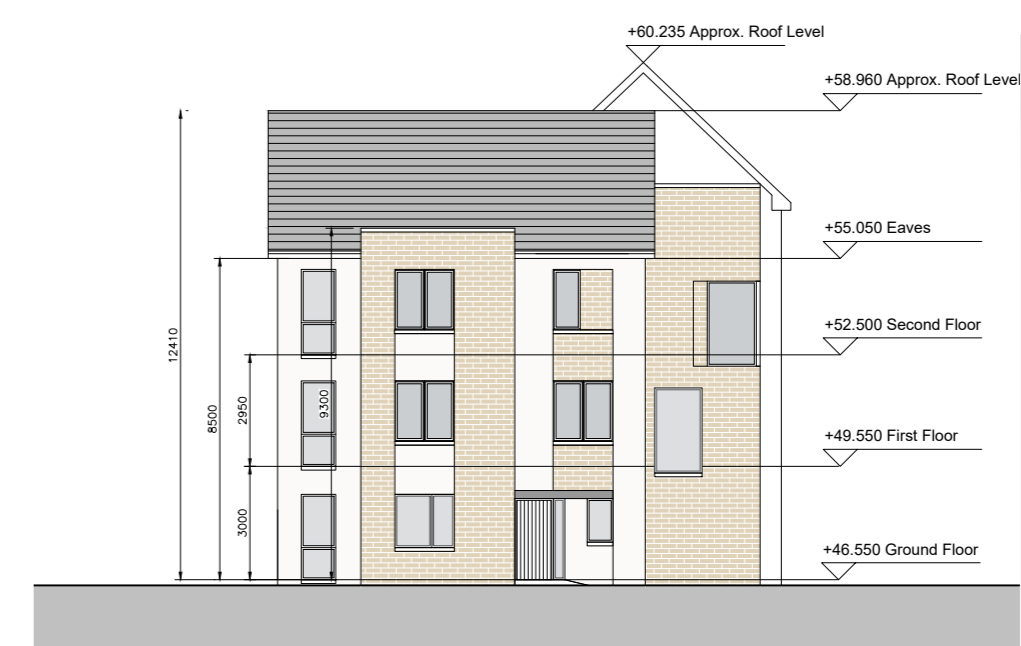
DUPLEX BLOCK S
STREET ELEVATION (LONG)



DUPLEX BLOCK S
REAR ELEVATION (LONG)



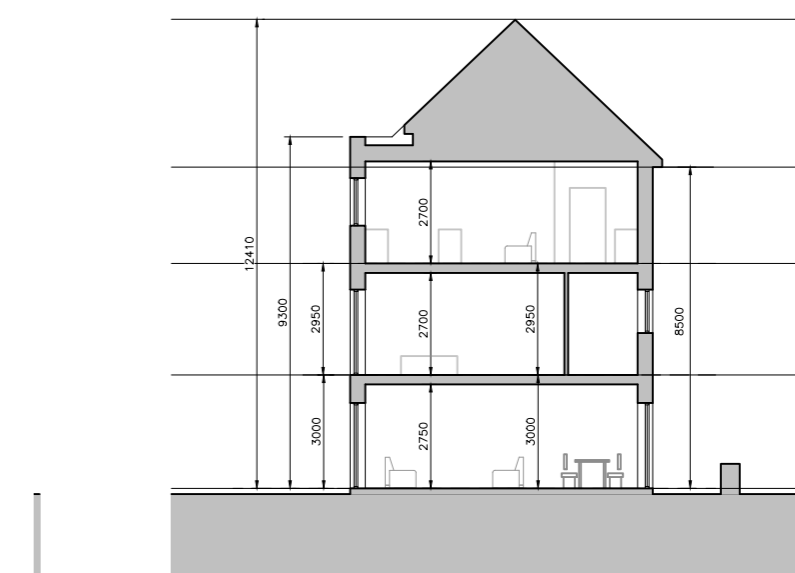
DUPLEX BLOCK S
ROOF PLAN



DUPLEX BLOCK S
FRONT ELEVATION (SHORT)



DUPLEX BLOCK S
REAR ELEVATION (SHORT)



DUPLEX BLOCK S
SECTION A-A

Unit Type

- 3 Bed Duplex - 5 Person
- 2 Bed Apartment - 4 Person
- 1 Bed Apartment - 2 Person

Block	1 Beds	2 Beds	3 Beds	Total Units
S	1	2	2	5

- © This drawing is copyright.
- Do not scale this drawing.
 - Errors and omissions to be immediately notified to Architect.
 - All dimensions to be checked on site.
 - To be read with relevant Engineers drawings.

Note on Internal Floor Plans
All noted room areas are gross. The proposed areas and aggregate areas comply with Sustainable Urban Housing: Design Standards for New Apartments Guidelines for Planning Authorities. (December 2020)

Where bedroom areas are noted they are exclusive of any built-in storage space.
Storage is generally provided off the hallway or kitchen, and is not provided within a bedroom. Furniture, fittings and fixtures shown on the plans are indicative.

External Finishes:
Roof: Slate or clay/concrete tiles with solar thermal or photovoltaic panels subject to orientation and detailed design

Walls: Selected facing brick with render where indicated on drawings with precast / stone capping or pressed metal capping to parapets

Cladding to Upper Level: Dark metal / Dark fibre cement boarding where indicated on drawings.

Louvers: Proprietary metal louvred doors with colour to match windows/doors where indicated on drawings.

Windows: Aluminium framed window system

Gutters/downpipes: uPVC or aluminium

Balconies: Projecting: Toughened glazing & stainless steel handrails on precast concrete or metal frame galvanized steel base and guarding/ railing.

Entrance Canopy: Pressed or standing seam metal on Timber framing

revisions	date	inls
description		
Duplex Block S		
Floor Plans, Section & Elevations		

drawing no.	1830-SHD-D-19-300
scale	1:200 A2
date	APL '22
drawn	MN
checked	PG

job
Development at Mooretown - Swords Phase 3

client
Gerard Gannon Properties

issue
Planning SHD Stage 3

CONROY CROWE KELLY ARCHITECTS
65 MERRION SQUARE DUBLIN 2

PHONE 66139901 FAX 6765715
e-mail info@cck.ie